

# **NIMHD DIRECTOR'S REPORT**

**National Advisory Council on Minority Health and Health Disparities**

**February 24, 2015**

**Yvonne T. Maddox, Ph.D.**

Acting Director, National Institute on Minority Health and Health Disparities (NIMHD)

National Institutes of Health (NIH)



# What's To Come

- News from NIH
- News and notes from NIMHD
- Budget and legislative updates
- Grants and programs
- Recognition of guest speakers
- Discussion with Council

# News from NIH

# National Library of Medicine Changes



- Dr. Don Lindberg, Director of the National Library of Medicine, will retire at the end of March
- Dr. Collins formed an Advisory Committee to the Director (ACD) working group to formulate a new vision for NLM over the next decade
- The ACD is co-chaired by Dr. Harlan Krumholz (Yale) and Dr. Eric Green (NHGRI)

# NCCAM is now NCCIH

- Effective December 17, the National Center for Complementary and Alternative Medicine has a new, Congressionally mandated name:

**The National Center for Complementary and Integrative Health, or NCCIH**



National Center for  
Complementary and  
Integrative Health

# President Obama Visits NIH



- President Obama visited NIH in December to congratulate scientists for delivering a potential Ebola vaccine
- He also emphasized that scientific research will help fight global health threats

# Use of a Single Institutional Review Board for Multi-Site Research

- NIH solicited comments on a draft policy to promote use of a single Institutional Review Board (IRB) for domestic sites of NIH-funded multi-site studies
- Goal of single IRB is to enhance and streamline the IRB review process and to reduce inefficiencies so that research can proceed without compromising ethical principles and protections
- Stay tuned: Input from the solicitation is being reviewed

# Precision Medicine Initiative

- President Obama recently unveiled the Precision Medicine Initiative — a bold new enterprise to revolutionize medicine and generate the scientific evidence needed to move the concept of precision medicine into every day clinical practice.
- Precision medicine is an emerging approach for disease treatment and prevention that takes into account individual variability in genes, environment, and lifestyle for each person.
- While significant advances in precision medicine have been made for select cancers, the practice is not currently in use for most diseases. Many efforts are underway to help make precision medicine the norm rather than the exception.



*The* **NEW ENGLAND JOURNAL** *of* **MEDICINE**

January 30, 2015

Perspective

## **A New Initiative on Precision Medicine**

Francis S. Collins, M.D., Ph.D., and Harold Varmus, M.D.

“Tonight, I’m launching a new Precision Medicine

The proposed initiative has two main components: a near-term focus on cancers and a longer-term aim to generate knowledge applicable to the whole range



# Unraveling Life's Mysteries through Basic Research: The BRAIN Initiative

**Last September, NIH made its first investment in the initiative's 12-year scientific vision with 58 awards**

**FY 2016 request totals \$135M – increase of \$70M**



Rendering of the John Edward Porter Neuroscience Research Center, NIH

**Funding will be used to:**

- Develop innovative technologies to advance basic neuroscience
- Generate methods for classifying the brain's diverse cells/circuits
- Create/optimize technologies for recording and modulating groups of cells that act together in circuits
- Develop new, non-invasive tools for human brain imaging

# NIH Common Fund *Enhancing Diversity in the NIH Biomedical Research Workforce*

## ■ Building Infrastructure Leading to Diversity (BUILD):

- Experimental training awards: how to attract & retain students from diverse backgrounds into biomedical research workforce

## ■ National Research Mentoring Network (NRMN):

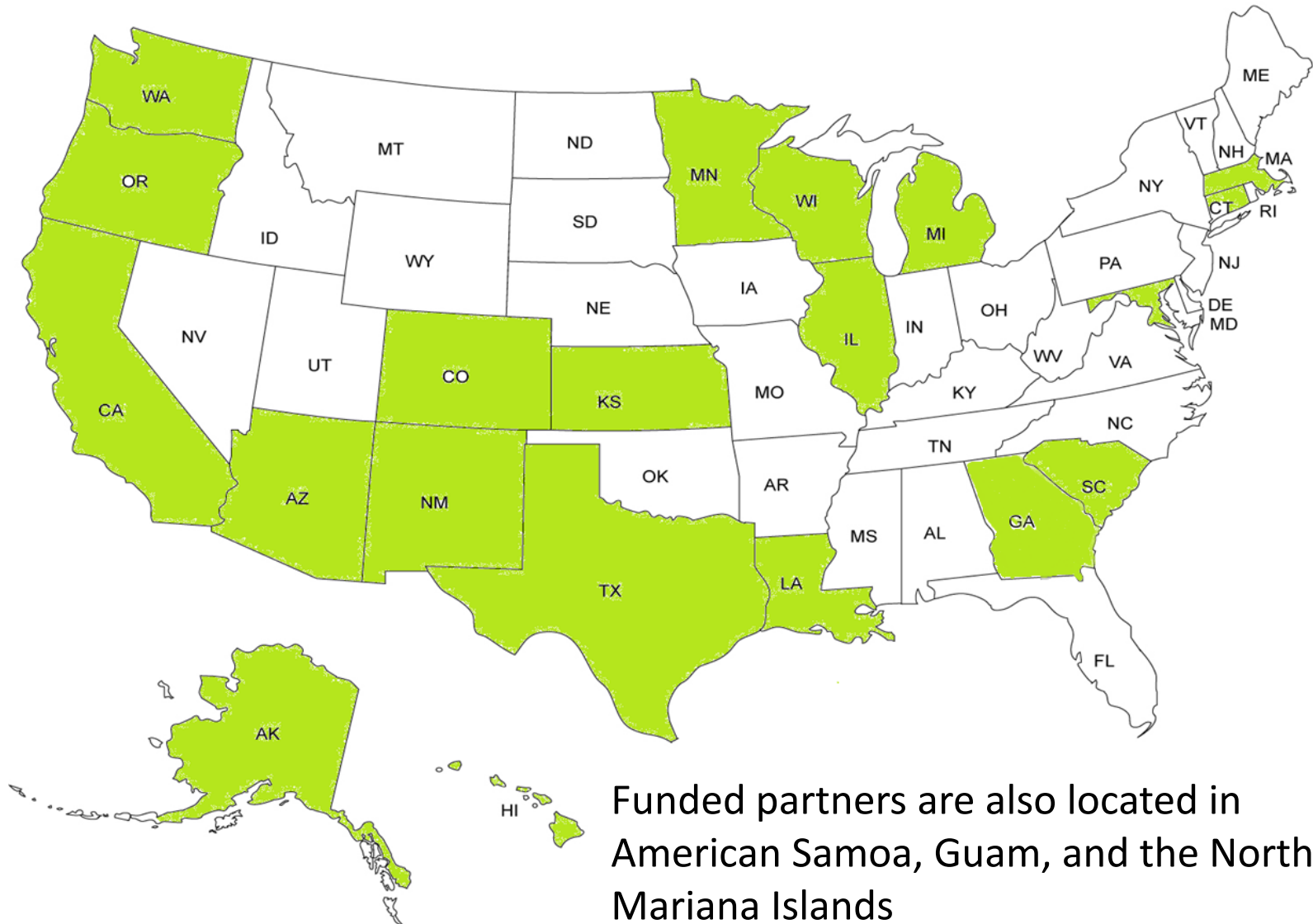
Nationwide network of mentors from variety of disciplines:

- Define best practices for mentoring at all career stages
- Training for mentors
- Networking & professional development for mentees

## ■ Coordination and Evaluation Center (CEC):

- Rigorously evaluate BUILD and NRMN programs to determine **WHAT WORKS AND FOR WHOM**
- Dissemination of successful training & mentoring strategies

# NIH Common Fund *Enhancing Diversity in the NIH Biomedical Research Workforce*



Funded partners are also located in American Samoa, Guam, and the Northern Mariana Islands

# NIH Common Fund *Enhancing Diversity in the NIH Biomedical Research Workforce*



# News and Notes from NIMHHD

# Expanding Communications

**NIH** National Institute on Minority Health and Health Disparities

## The Health Disparities Courier

December 2014

---

NATIONAL INSTITUTE ON MINORITY HEALTH AND HEALTH DISPARITIES

**WELCOME MESSAGE**

Welcome to our inaugural issue of The Health Disparities Courier, a communication venue to highlight the wonderful work, exciting research programs and activities, and dedicated people who make up the National Institute on Minority Health and Health Disparities (NIMHD). Each issue will look at a prominent topic in the Director's Update and provide news about administrative, operational, legislative, and budget matters. We spotlight recent staff accomplishments and recognize new and departing staff. Finally, we feature research that is moving health disparities science forward.

We look forward to including news and accomplishments of our NIMHD Advisory Council Members and Friends Network, so please plan to share.

Enjoy our first issue.

Yvonne T. Maddox, PhD  
Acting Director

**DIRECTOR'S UPDATE**

"If not now, when?" was the message that NIH Director Dr. Francis S. Collins offered as he charged NIMHD to proceed forth diligently to address the critical issue of health disparities at our inaugural operational planning meeting in July, which set the upcoming research agenda. NIMHD lies on the precipice of change.

The diversity of the U.S. population continues to expand as the scarcity of targeted health disparities research has progressed minimally in the last 20 years. This lack of progress can be contributed, in part, to the blending of minority health and health disparities, despite encompassing separate research fields. This approach has resulted in the science of health disparities research not being well defined. The nascent field lacks the foundational theories and tools, such as research parameters, models

the determinants; however, the interactive patterns of these health determinants remain a speculation. Health disparities research must focus on a strategy that examines the integration of behavioral risk factors, biological risks factors, co-morbidities (infectious disease and chronic illness), protective and/or resiliency factors, health care/research system factors, environmental/physical determinants, social determinants, and health-related quality of life in order to fully understand how health disparity conditions exist. By understanding these complexities scientifically, appropriate interventions can be designed and offered at the right time in order to impact the burden of health disparities.

As NIMHD implements the charge and fulfills a unique role at NIH, tools and measures that can discern the impact of the research on health disparities must be scientifically

National Institute on Minority Health & Health Disparities

**Twitter: @NIMHD**

**Facebook:**

<https://www.facebook.com/NIMHD>

# Council Highlights



Contact:  
Angela Bates  
Special Assistant to the Director  
NIMHD  
(301) 451-4254  
BatesA@od.nih.gov

# New Appointments: Staff, Details, Contractors

- **Dr. Hui Chen** has moved to CSR after 2.5 years as a Scientific Review Officer at NIMHD.
- **Dr. Courtney Ferrell Aklin** joined NIMHD in January 2015 as the acting chief of staff. She is on a detail from NINDS where she served as a program director in the Office of Special Programs and Diversity.
- **Dr. Nancy Breen** will join NIMHD as a detailee to assist NIMHD in enhancing measurement of health disparities and guiding programs to include health economics. She joins us from the Healthcare Delivery Research Program, NCI.
- **Dr. Tilda Farhat** joined NIMHD as a health scientist administrator in the Office of Strategic Planning, Legislation, and Scientific Policy. Prior to joining NIMHD, she was a Health Scientist Administrator at NCI.
- **Dr. Kevin Gardner** is serving as acting scientific director, NIMHD. He is a tenured senior investigator in the Genetics Branch, NCI, and head of the Transcription Regulation Section. Dr. Gardner is also a senior investigator in the NIMHD intramural program.



## New Appointments: Staff, Details, Contractors (Cont'd)

- **Mildred J. Qualls** joined NIMHD as a grants management specialist last September. Prior to joining NIMHD, she was a grants management specialist at NIAID.
- **Kenneth Sonnenberg** joined NIMHD in November 2014 on detail from NINDS. As of February 2015, he joined the NIMHD budget office permanently. He was previously a budget analyst at NINDS.
- **Terry Williams**, contractor with NIMHD, joined the budget office in November 2014. He previously spent nearly three years working in NIMHD's Grants Management Office before transitioning to the budget office.

# NIMHD's Inaugural Staff Recognition Ceremony



- December 8, 2014, Wilson Hall, NIH Campus
- To recognize the commitment and achievements of NIMHD staff who made significant contributions to advance NIMHD's mission in 2014

# Selected NIMHD Trans-NIH Collaborations

<b>NIH Partner</b>	<b>Activity</b>
NICHD/OAR	Adolescent Medicine Trials Network
NIAID/OAR	Center for AIDS Research
NIDA	Adolescent Brain Cognitive Development (ABCD) Initiative
NIEHS	Centers of Excellence on Environmental Health Disparities
NHGRI	Inclusion of diverse populations in genomic databases
OBSSR	Training in Population Health Science
DIR/OD	Medical Research Scholars Program

# Highlighted Trans-NIH Activities

- **Centers of Excellence on Environmental Health Disparities (P50)**  
Proposed research is expected to develop innovative approaches to understand environmentally-driven health disparities and improve access to healthy environments for vulnerable populations and communities. Participating organizations include NIMHD, NIEHS, NICHD and the EPA's National Center for Environmental Research.
  
- **Adolescent Medicine Trials Network for HIV/AIDS Interventions (ATN)**  
The ATN is the only national, multicenter research network devoted to the health and well-being of HIV-infected and at-risk adolescents and young adults. With funding from OAR, participating organizations include NIMHD, NICHD, NIDA, NIMH and NIAID.

# Inclusion of Diverse Populations in Clinical Trials

## COMMENT

**INEQUALITY** Frank discussion about differences strengthens research **p.303**

**ETHICS** A call for sensitive cross-cultural mental-health research **p.304**

**RACE** Three very different books miss the point: social equality **p.306**



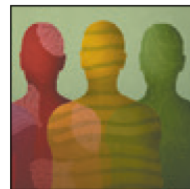
**AUTUMN BOOKS** Steven Pinker on style, E. O. Wilson on life, Naomi Klein on money **p.309**



Common asthma drugs can work less well for children of some ethnicities.

## Missing patients

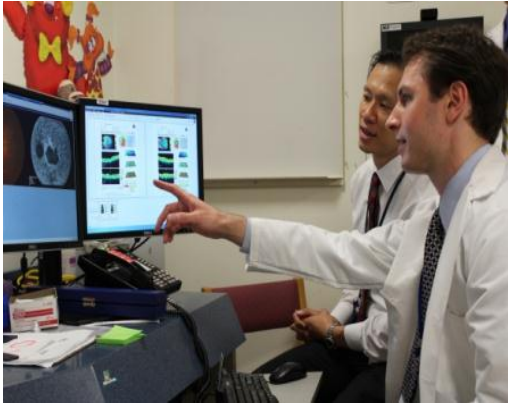
Effective clinical studies must consider all ethnicities – exclusion can endanger populations, says **Esteban G. Burchard**.



### DIVERSITY

A *Nature* and *Scientific American* special issue [nature.com/diversity](http://nature.com/diversity)

# NIH Medical Research Scholars Program (MRSP)



- A comprehensive, year-long residential research enrichment program for medical, dental, and veterinary students
- Located on the NIH Intramural Research campus in Bethesda, MD
- Co-sponsored by the NIH and private partners via contributions to the Foundation for the NIH
- Scholars are engaged in a mentored basic, translational, or clinical research project in an area that matches their personal interests and career/research goals



## **Collaborations and Community Engagement**

# Collaborations and Community Engagement

## Fuel Up to Play 60

GENYOUth Foundation, National Dairy  
Council and the National Football  
League



*Brother You Are on My Mind:  
Changing the National Dialogue  
Regarding Mental Health Among  
African American Men*

Omega Psi Phi, Inc.  
Men's Mental Health Initiative



# Selected Staff Presentations

- **“Research Perspective – Social Determinants of Global Immigrant/Migrant Health,”** Rockefeller Bellagio Conference on Place, Migration and Health: Social Determinants of Global Immigrant/Migrant Health, Rockefeller Foundation, October 2014, Bellagio, Italy
- **“The Story Behind the Story: Successful Authors Share Lessons from Highly-Cited Maternal and Child Health Journal Articles,”** American Public Health Association’s Annual Meeting and Exposition, November, 2014, New Orleans, LA
- **“Conquering Health Disparities: Engaging Communities,”** Grand Rounds Lecture, Florida State University College of Medicine, January, 2015, Tallahassee, FL
- **“The Science of Health Disparities,”** Inaugural UMB-UMBC Research & Innovation Partnership Symposium University of Maryland, Baltimore County, January, 2015, Baltimore, MD
- **“The Science of Health Disparities,”** 2015 Curtis L. Parker Lecture, Morehouse School of Medicine, February, 2015, Atlanta, GA

# NIMHD American Indian and Alaska Native Research Forum

- Expanding the pool of scientists, researchers and health professionals with the American Indian and Alaska Native community is essential to addressing the many interrelated causes of disease and ill health in this population
- First-time research forum to showcase NIH-funded American Indian/Alaska Native researchers and their contributions to biomedical research

**Contact:**

Dr. Dorothy M. Castille  
Program Officer, NIMHD  
(301) 402-1366  
Dorothy.Castille@nih.gov

**National Institute on Minority Health and Health Disparities  
American Indian/Alaska Native (AI/AN)  
Research Forum**

November 20, 2014  
8:00 a.m. - 5:00 p.m.  
Porter Neuroscience Research Center  
NIH Main Campus, Building 35, Room 620  
Bethesda, MD

**Presenters**

	<b>Spero M. Manson, PhD</b> Distinguished Professor School of Public Health University of Colorado Denver	Pursuing Rigorous Science of Local Benefit: 35 Years of Research in Indian Country
	<b>Valarie Blue Bird Jernigan, DrPH, MPH</b> Associate Professor, Health Promotion Sciences College of Public Health University of Oklahoma Health Sciences Center Tulsa, Oklahoma	Community-Based Participatory Policy Work to Address Obesity in Tribal Nations: The THRIVE Study
	<b>Stacy M. Rasmus, PhD</b> Research Assistant Professor The Institute of Arctic Biology and Center of Alaska Native Health Research University of Alaska Fairbanks	Engaging Alaska Native Youth and Communities in Research to Reduce Disparities in Alcohol Abuse and Suicide in the Arctic
	<b>Jeffery Henderson, MD, MPH</b> President and CEO Black Hills Center for American Indian Health Rapid City, South Dakota	The Curious Case of Cancer in American Indians/Alaska Natives
	<b>Bonnie Duran, DrPH</b> Associate Professor and Adjunct Associate Professor School of Social Work and Department of Health Services, School of Public Health University of Washington	Community Engagement as a Path to Health Equity: Promoting Both Culture-Centered and Evidence-Based Interventions in 'Indian Country'
	<b>Stacey Jolly, MD, MAS, FACP</b> Assistant Professor of Medicine Cleveland Clinic Lerner College of Medicine Case Western Reserve University	Chronic Disease Research Among American Indians and Alaska Natives

**Panelist**

Dr. Spero M. Manson (Pembina Chippewa) University of Colorado Denver	Dr. Denise Dillard (Inupiaq) South Central Foundation
Dr. Jeffrey Henderson (Lakota, Cheyenne River Sioux Tribe), Black Hills Center for American Indian Health	Dr. Ronny Bell (Lumbee) Wake Forest University School of Medicine
Dr. Maria Yellow Horse Brave Heart (Hunkpapa, Oglala Lakota) University of New Mexico	Dr. Jada Brooks (Lumbee) University of North Carolina, Chapel Hill



# Workshops and Conferences Held

## ■ ***National Hispanic Medical Association Consensus Summit on Building Diversity in Medicine and Research***, January 29, 2015

- Shared lessons learned, best practices, and innovative strategies and recommendations for next steps toward enhancing workforce diversity in medicine, biomedical, and behavioral research
- Discussed NIH's new integrated approach to expanding diversity in biomedical research careers, including a renewed commitment to ensuring fairness in peer review

## ■ **Research Forum on HIV/AIDS Behavioral Intervention to Prevent HIV Among Diverse Young MSM**, February 13, 2015

- Discussed current research and challenges regarding behavioral interventions to prevent HIV infection in young MSM from diverse backgrounds
- Identified strategies to facilitate and increase collaboration among researchers and affected communities in developing behavioral interventions and dissemination of interventions

# Upcoming Workshops and Conferences

## ■ ***Preventing Disparities in Chronic Diseases: Community-based Multilevel Interventions***, March 30-31, 2015

- Multilevel interventions are interventions with multiple components designed to affect factors in two or more levels of the local ecology
- This scientific workshop will focus on disparities in chronic disease prevention, with the goal to identify research gaps and opportunities for targeted initiatives

## ■ ***Training in Interdisciplinary Population Health Science: A Vision for the Future, Institute of Medicine Roundtable***, June 2015

- Population health science is an interdisciplinary science that develops an integrated understanding of the determinants of health and health disparities, and therefore holds promise for advancing the science of health disparities
- Meeting outcome: A white paper that will provide a review of the needs, lessons learned, and challenges for training in interdisciplinary population health science

# Assessing the NIMHD Research Endowment Program

- Mandated by the Minority Health and Health Disparities Research and Education Act of 2000 (P.L. 106-525)
- Supports endowments of academic institutions to build research infrastructure and recruit, train, and maintain a diverse student body and faculty
- During the past 15 years, 156 awards have been given out totaling \$410M
- The current program is up for re-competition

# Health Disparities Science Visioning

## Goals for the Scientific Visioning Initiative

The Health Disparities Science Vision, led by the NIMHD in collaboration with the NIH Institutes and Centers, brought together diverse voices (scientific and community stakeholder) to generate new perspectives for advancing the study of health disparities.

The overall goal is to develop a transformational health disparities research agenda that defines the science of health disparities for the next decade.

## Key Steps

- Presentation to NIH Institute Directors
- Staff Planning and Retreat
- NIMHD Advisory Council Discussion
- Workshops with extramural scientific community
- Summary White Papers
- Large Meeting (Summit)
- Science Vision Statement
- Publication of the Science Vision Statement
- Vision Statement to inform NIH Strategic Plan

# Budget and Legislative Updates

# Appropriations Update

- Budget (PL-113-235) signed by President Obama on December 16 funds through September 30, 2015. NIH received \$30.1B, an increase of 0.5% from FY 2014
- NIMHD's budget for FY 2015 is \$270.97M
- The NIH FY 2016 President's Budget request is \$31.3B, an increase of \$1B over FY 2015
- NIMHD, in the FY 2016 request, receives \$281.55M





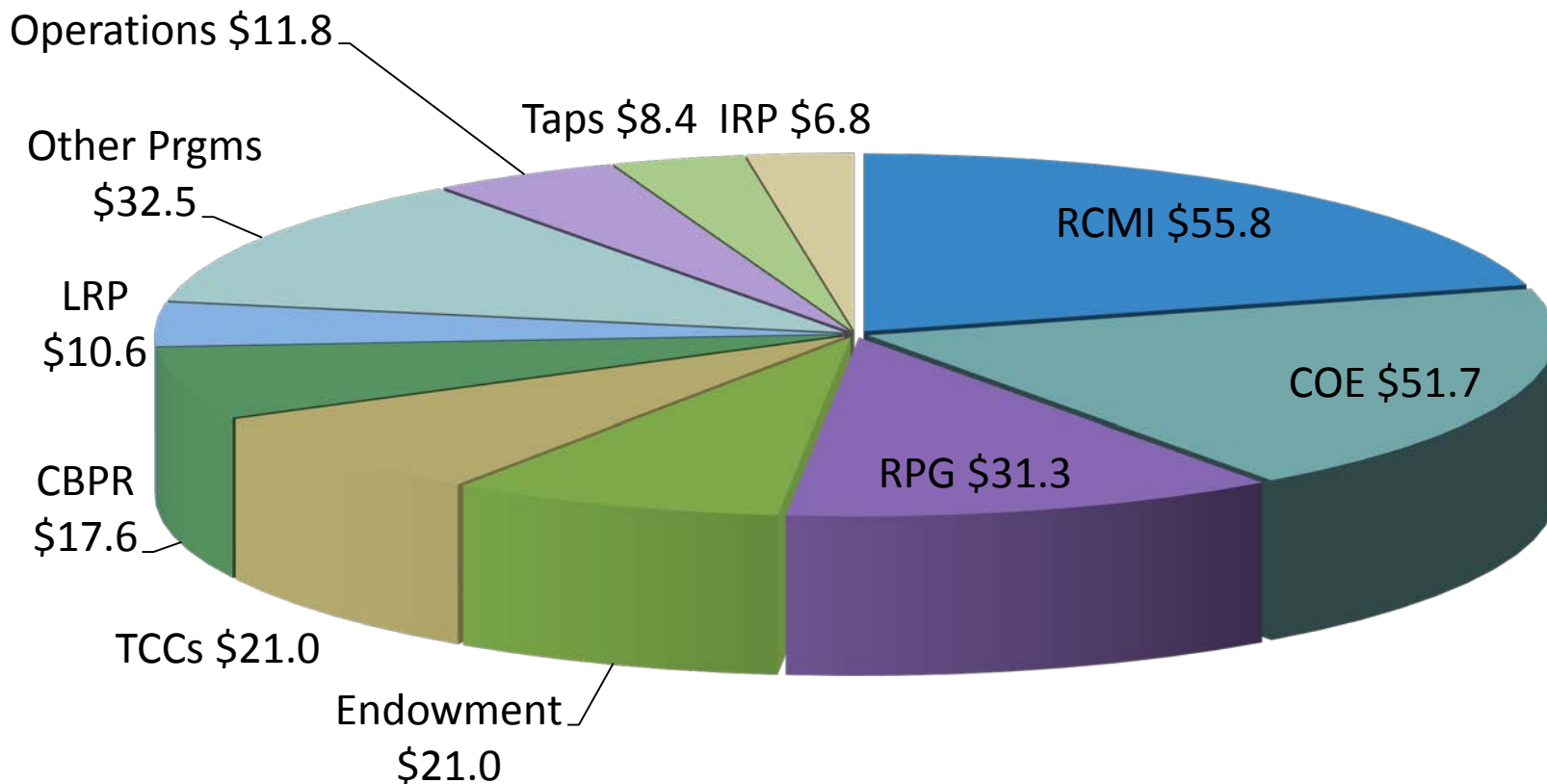
# FY 2016 Request: Highlights of Targeted Increases

Precision Medicine Initiative*	\$200M
• <i>Cancer</i>	\$70M
• <i>Other Diseases</i>	\$130M
Antimicrobial Resistance (NIAID)	\$100M
Flu Vaccine (NIAID)	\$20M
BRAIN Initiative*	\$70M
Alzheimer's Disease (NIA)	\$50M

\* Multiple ICs participate in the initiative.

# FY 2014 NIMHD Actual Funding Distribution

## \$268.5M

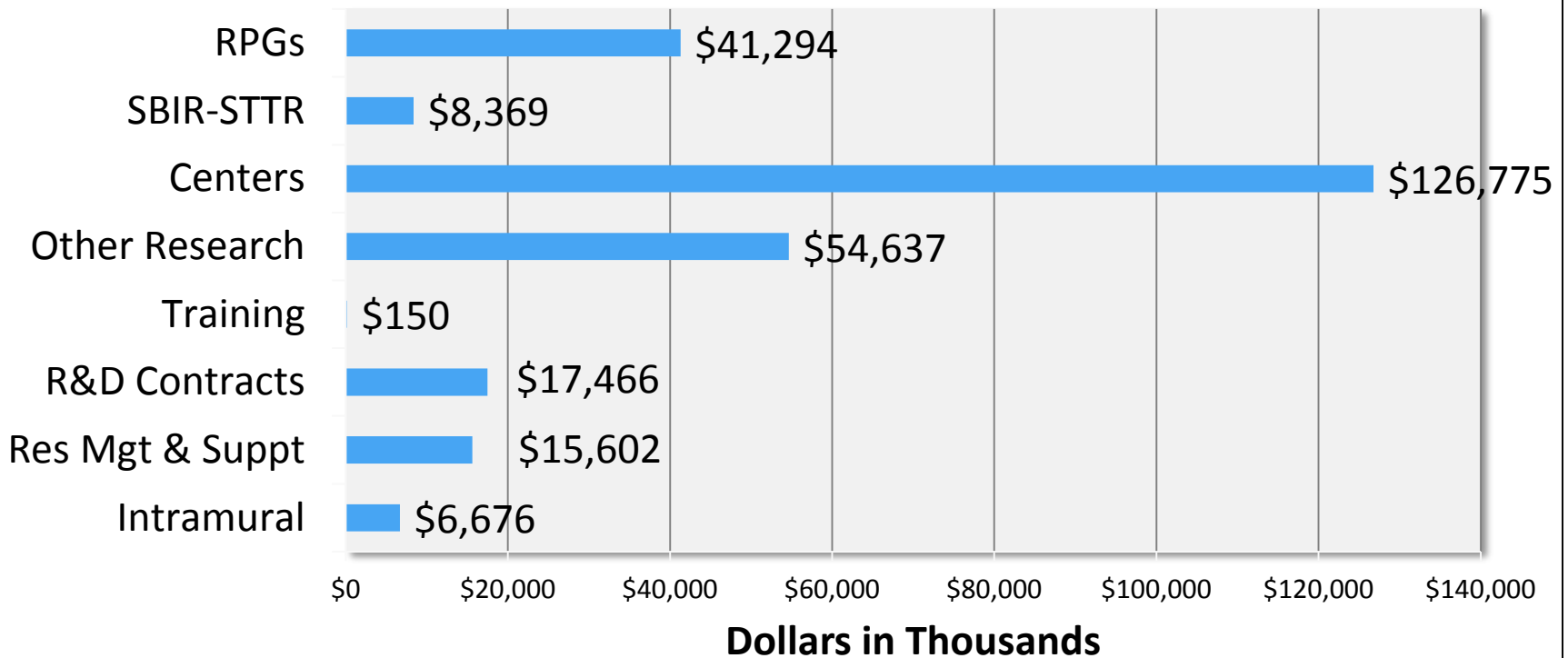


Other Programs include: SBIR/STTR \$8.1M; Cooperative Agreements \$7.4M; MHIRT \$5.8M; Collaborations \$5.2M; Science Education \$2.7M; BRIC \$2.2M and DREAM \$1.1M. IRP includes taps of \$3.1M.

# FY 2015 NIMHD Budget by Mechanism

*Dollars in Thousands*

**Direct Budgetary Resources = \$270,969**



# HHS Budget Hearing

On February 4, 2015, the Senate Finance Committee held a hearing on the President's FY 2016 HHS Budget where HHS Secretary Sylvia Burwell testified. Senator Cardin asked Secretary Burwell to share her commitment to NIH funding, specifically, the NIMHD.

# Resolutions and Bills of Interest

**H.R. 45** – On January 6, 2015, Representative Sheila Jackson Lee (D-TX) introduced H.R. 45, the Triple-Negative Breast Cancer Research and Education Act of 2015. The bill would require the Director of NIH to expand, intensify, and coordinate programs for the conduct and support of research with respect to triple-negative breast cancer.

**H.R. 258** – On January 9, 2015, Representative Barbara Lee (D-CA) introduced H.R. 258, the Half in Ten Act of 2015. The bill would establish the Federal Interagency Working Group on Reducing Poverty which will create and carry out a national plan to cut poverty in American in half in ten years.

**S.216** – On January 21, 2015, Senator Jeff Sessions (R-AL) introduced S. 216, the National Prostate Cancer Council Act. The bill would establish the National Prostate Cancer Council on Screening, Early Detection, Assessment, and Monitoring of Prostate Cancer.

**S.Res.62** – On February 2, 2015, Senator Heidi Heitkamp (D-ND) submitted a resolution designating the week beginning Feb. 8, 2015 as “National Tribal Colleges and Universities Week.” The resolution passed the Senate without amendment.

# NIMHD Outreach and Legislative Activities

- On December 10, 2014, the inaugural meeting of the NIMHD Outreach Coalition was held to share information about the NIMHD's history, mission, and research. Subsequently, the Friends of NIMHD has been formed, chaired by Dr. Lisa Simpson, President and CEO of AcademyHealth.
- On January 13, 2015, at the request of Representative Robin Kelly (D-IL), the Chair of the Congressional Black Caucus Health Braintrust, Dr. Maddox, Acting Director, NIMHD, briefed the Representative about the research mission of the Institute.
- On March 2, 2015, Dr. Richard H. Carmona, the 17th U.S. Surgeon General and the President of the Canyon Ranch Institute (CRI) Board of Directors, will visit NIMHD to discuss possible areas of collaboration with CRI.

# Grants and Programs

# Highlighted or Relevant Grant Releases

**System-Level Health Services and Policy Research on Health Disparities (R01)** <http://grants.nih.gov/grants/guide/rfa-files/RFA-MD-15-001.html>

**NIMHD Academic Research Enhancement Award: Enhancing Health Disparities Research at Undergraduate Institutions (R15)** <http://grants.nih.gov/grants/guide/rfa-files/RFA-MD-15-002.html>

**Technologies for Improving Minority Health and Eliminating Health Disparities (R41/R42)** <http://grants.nih.gov/grants/guide/rfa-files/RFA-MD-15-003.html>

**Innovations for Healthy Living - Improving Minority Health and Eliminating Health Disparities (R43)** <http://grants.nih.gov/grants/guide/rfa-files/RFA-MD-15-004.html>



# Today's Presentations

# Precision Medicine

Dr. Eric D. Green, Director,  
National Human Genome  
Research Institute, NIH

“21st century businesses will rely on American science and technology, research and development. I want the country that eliminated polio and mapped the human genome to lead a new era of medicine: one that delivers the right treatment at the right time.”

President Barack Obama  
January 20, 2015



# Adolescent Behavior and Cognitive Development: The Brain Initiative

Dr. Nora D. Volkow, Director,  
National Institute on Drug Abuse, NIH



Last September, NIH made its first investment  
in the initiative's 12-year scientific vision with 58 awards

FY 2016 request totals \$135M – increase of \$70M



Rendering of the John Edward Porter Neuroscience Research Center, NIH

# The Environmental Affordances Model for Understanding Population Disparities in Physical and Mental Health



Dr. James S. Jackson, Daniel Katz Distinguished University Professor of Psychology, Professor of Afro American and African Studies, and Director of the Institute for Social Research, University of Michigan

# Discussion...

Comments, questions?